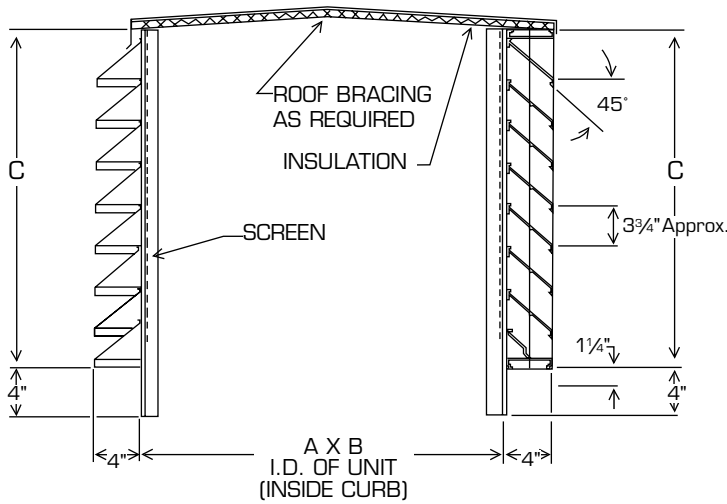




CERTIFICATION & SUBMITTAL
MODEL 7130
Extruded Aluminum Penthouses



STANDARD SPECIFICATIONS

- **FRAME:** 1-1/2" x 1-1/2" x 1/8" aluminum structural angles.
- **BLADES:** .081 6063T5 extruded aluminum.
- **ROOF:** Removable .063 3003-H-14 aluminum press formed and screwed to frame.
- **INSULATION:** 1/2" fiberglass on underside of roof.
- **BIRDSCREEN:** .051 x 3/4" diamond pattern expanded aluminum.
- **CONSTRUCTION:**
 - A. Mitered Corner – heliarc welded mitered corners.
 - B. Box Corner – .063 aluminum

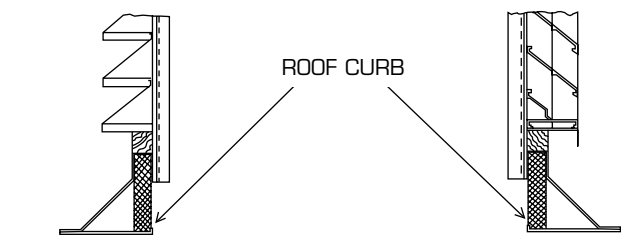
OPTIONS

- 40 Standard screen in removable frame.
- 42 18 x 16 mesh aluminum insect screen (removable).
- 45 1/2" x 1/2" x .063 aluminum screen.
- 47 1/2" x 1/2" x 19 gauge P.V.C. coated birdscreen.
- 95 Finishing.
- 99 Nonstandard option on standard products, specify.

NOTES

1. A and B are opening dimensions. Unless otherwise specified, penthouses are made 1/2" undersize.
2. Refer to form #2730 for louver construction.
3. Refer to catalog #8000 for roof curb information.
4. Large units, depending on freight requirements are shipped knocked down in multiple sections for field assembly.

Penthouse Model	Corners	Louver Model
7131	Miter	2730
7132	Box	2730



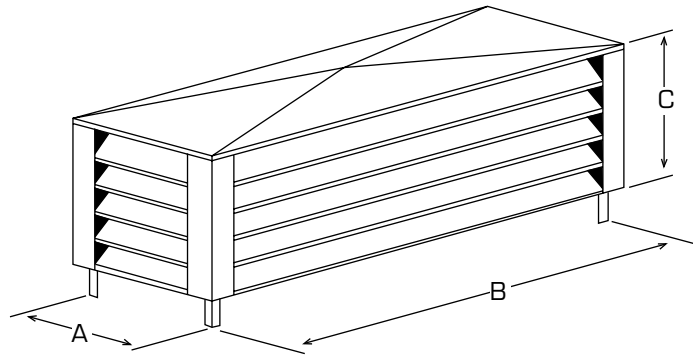
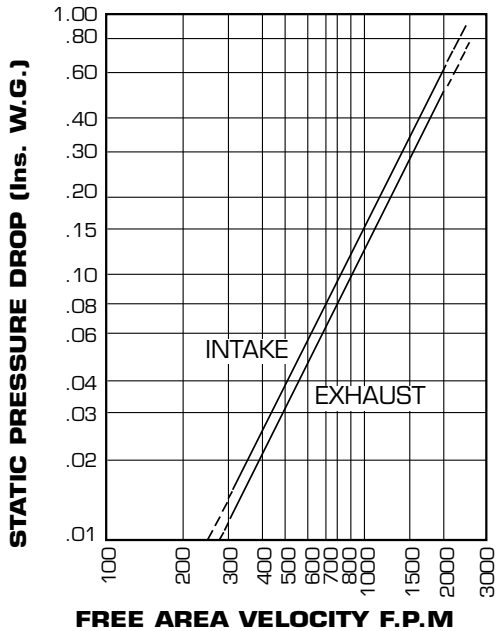
**PERFORMANCE DATA
MODEL 7130
Extruded Aluminum Penthouse**

FREE AREA CHART

		A - WIDTH or B LENGTH (In Inches)															
		12	16	20	24	28	32	36	40	44	48	52	56	60	64	68	72
C - HEIGHT (In Inches)	12	.26	.36	.47	.57	.68	.78	.89	.99	1.10	1.20	1.31	1.41	1.52	1.62	1.73	1.83
	16	.44	.62	.80	.97	1.15	1.33	1.51	1.68	1.86	2.04	2.22	2.40	2.57	2.75	2.93	3.11
	20	.61	.86	1.11	1.35	1.60	1.85	2.10	2.34	2.59	2.84	3.08	3.33	3.58	3.83	4.07	4.32
	24	.80	1.12	1.44	1.76	2.08	2.41	2.73	3.05	3.37	3.69	4.02	4.34	4.66	4.98	5.30	5.62
	28	.97	1.36	1.75	2.14	2.53	2.93	3.32	3.71	4.10	4.49	4.88	5.27	5.66	6.06	6.45	6.84
	32	1.14	1.60	2.05	2.51	2.97	3.43	3.89	4.35	4.81	5.27	5.73	6.19	6.64	7.10	7.56	8.02
	36	1.32	1.85	2.38	2.91	3.44	3.98	4.51	5.04	5.57	6.10	6.64	7.17	7.70	8.23	8.76	9.30
	40	1.50	2.10	2.71	3.31	3.92	4.52	5.13	5.73	6.34	6.94	7.55	8.15	8.76	9.36	9.97	10.57
	44	1.68	2.36	3.03	3.71	4.39	5.07	5.74	6.42	7.10	7.78	8.46	9.13	9.81	10.49	11.17	11.84
	48	1.86	2.61	3.36	4.11	4.86	5.61	6.36	7.11	7.86	8.61	9.36	10.12	10.87	11.62	12.37	13.12
	52	2.04	2.86	3.69	4.51	5.33	6.16	6.98	7.80	8.63	9.45	10.27	11.10	11.92	12.75	13.57	14.39
	56	2.19	3.08	3.96	4.85	5.73	6.62	7.50	8.39	9.27	10.16	11.04	11.93	12.81	13.70	14.58	15.47
	60	2.40	3.37	4.34	5.31	6.28	7.25	8.22	9.19	10.15	11.12	12.09	13.06	14.03	15.00	15.97	16.94
	64	2.55	3.58	4.61	5.64	6.66	7.69	8.72	9.75	10.78	11.81	12.84	13.87	14.90	15.93	16.96	17.99
	68	2.73	3.83	4.93	6.03	7.13	8.23	9.33	10.44	11.54	12.64	13.74	14.84	15.94	17.04	18.15	19.25
	72	2.90	4.08	5.25	6.42	7.60	8.77	9.94	11.12	12.29	13.46	14.64	15.81	16.99	18.16	19.33	20.51

FREE AREA (Sq. Ft.) PER LOUVER SECTION

AIR PERFORMANCE



Free Area = {2 (AxC)} + {2 (BxC)}

Example: Model 7132
 24" (A) x 36" (B) x 12" (C) I.D. Dimensions
 Free Area = {2 (Free Area of 24" x 12")} + {2 (Free Area of 36" x 12")}
 Free Area = {2 (.57)} + {2 (.89)}
 Free Area = (1.14) + (1.78)
 Free Area = 2.92 Sq. Ft.

It is possible for moisture to penetrate louvers under adverse atmospheric conditions. Drained ductwork or other means of drainage is recommended.

Data shown does not include a birdscreen. Graphs are corrected to standard air density .075 lb. per cubic ft.

RECOMMENDED MAXIMUM INTAKE FREE AREA VELOCITY 500 F.P.M.