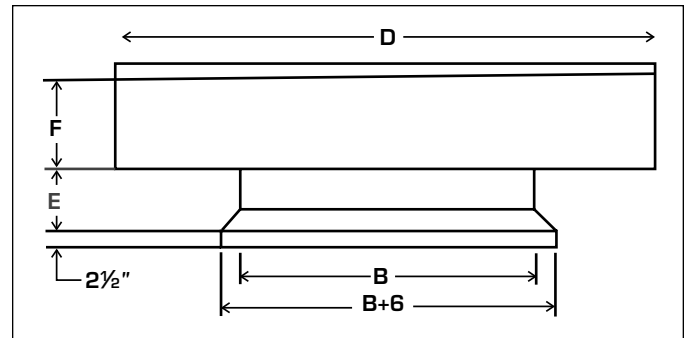
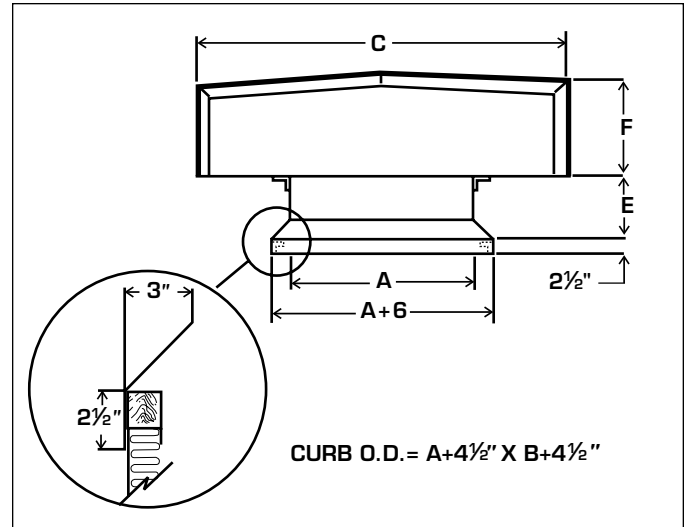




**CERTIFICATION & SUBMITTAL  
MODEL 6200 AIR INTAKE VENTILATOR  
Curb Mounted**



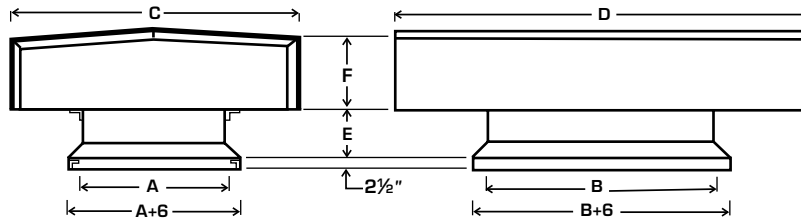
**STANDARD SPECIFICATIONS**

- **HOOD:** 18 gauge galvanized steel.
- **BASE SECTION:** 18 gauge galvanized steel.
- **CONSTRUCTION:** Base section continuously welded. Hood is bolted to base.
- **BIRDSCREEN:** 19 gauge 1/2" x 1/2" galvanized steel.
- **FINISH:** Standard Mill.
- **MINIMUM SIZE:** 12" x 12"
- **MAXIMUM SIZE:** 60" x 120"

**OPTIONS**

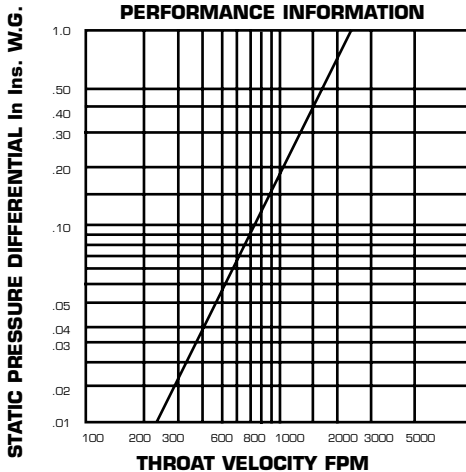


**PERFORMANCE DATA MODEL 6200**  
**Air Intake Ventilator**  
**Curb Mounted**



**MODEL 6200 DIMENSIONS**

Throat Area Sq. Ft.	Size — Ins.		Dimensions — Ins.				Throat Area Sq. Ft.	Size — Ins.		Dimensions — Ins.			
	A	B	C	D	E	F		A	B	C	D	E	F
1.00	12	12	24	24	10	6	18.00	36	72	78	114	12	21
1.33	12	16	26	30	10	7	18.00	48	54	92	98	12	22
1.66	12	20	28	36	10	8	20.00	30	96	70	136	12	20
1.77	16	16	32	32	10	8	20.00	48	60	94	106	12	23
2.00	12	24	28	40	10	8	20.25	54	54	96	96	12	21
2.22	16	20	34	38	10	9	21.00	36	84	74	122	12	19
2.50	12	30	30	48	10	9	21.00	42	72	82	112	12	20
2.66	16	24	36	44	10	10	22.50	54	60	98	104	12	22
2.77	20	20	40	40	10	10	22.50	30	108	66	144	12	18
3.33	16	30	36	50	10	11	24.00	48	72	92	116	12	22
4.00	24	24	48	48	10	12	24.50	42	84	84	126	15	21
4.16	20	30	44	54	10	12	25.00	30	120	66	156	15	18
5.00	24	30	50	56	10	13	25.00	60	60	106	106	15	23
6.25	30	30	56	56	10	13	27.00	36	108	78	150	15	21
7.50	30	36	58	64	10	14	27.00	54	72	102	120	15	24
8.75	30	42	60	72	10	15	28.00	42	96	86	140	15	22
9.00	36	36	68	68	10	16	28.00	48	84	94	130	15	23
10.00	30	48	62	80	10	16	30.00	36	120	78	162	15	21
10.50	36	42	70	76	10	17	30.00	60	72	110	122	15	25
11.25	30	54	64	88	10	17	31.50	54	84	104	134	15	25
12.00	36	48	72	84	10	18	31.50	42	108	88	154	15	23
12.25	42	42	78	78	12	18	32.00	48	96	96	144	15	24
12.50	30	60	64	94	12	17	35.00	42	120	90	168	15	24
13.50	36	54	74	92	12	19	35.00	60	84	114	138	15	27
14.00	42	48	82	88	12	20	36.00	48	108	98	158	15	25
15.00	30	72	66	108	12	18	36.00	54	96	106	148	15	26
15.00	36	60	76	100	12	20	40.00	48	120	100	172	15	26
15.75	42	54	84	96	12	21	40.00	60	96	116	152	15	28
16.00	48	48	90	90	12	21	40.50	54	108	108	162	15	27
17.50	30	84	68	122	12	19	45.00	54	120	110	176	15	28
17.50	42	60	84	102	12	21	45.00	60	108	118	166	15	29
							50.00	60	120	120	180	15	30



Performance information derived from testing size 36" x 36" units in accordance with AMCA Standard 210-74, with test set-ups as per figures 12 & 15. For units less than 9 sq. ft. throat area, increase static pressure 150%. Data is not certifiable.

Example: 4000 cfm. Model 6200  
 Select size 24" x 24" 1000 F.P.M. throat velocity.  
 Static Pressure = 0.18 x 1.5 = 0.27 ins. WG