



VENT PRODUCTS CO., INC.
 Certifies that the 2750 louver shown herein is licensed to bear the AMCA Seal. The ratings shown are based on tests and procedures performed in accordance with AMCA Publications 511 and comply with the requirements of the AMCA Certified Ratings Program. The AMCA Certified Ratings Seal applies to air performance and ratings and water penetration ratings.

VENT PRODUCTS CO., INC.

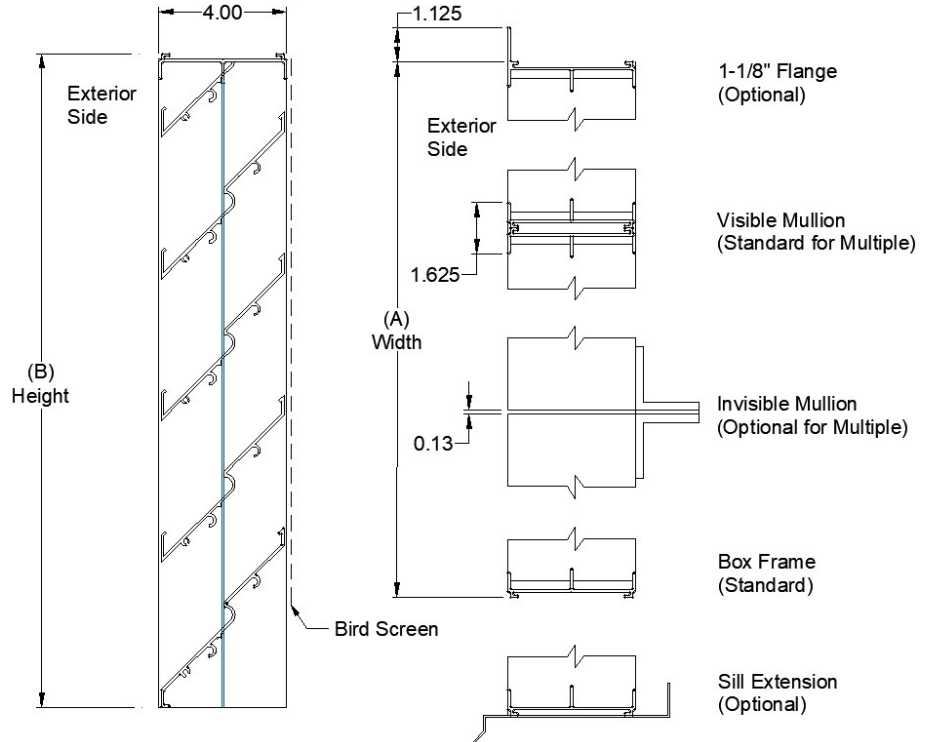
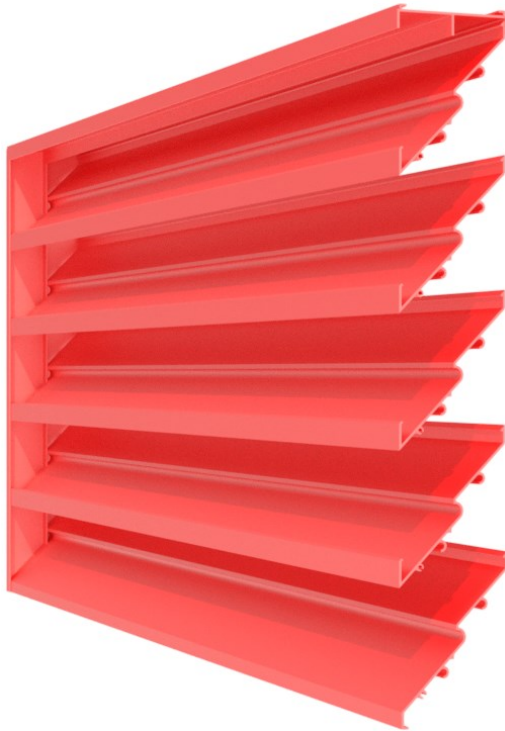
1901 South Kilbourn Avenue Chicago, Illinois 60623

Telephone : 773-521-1900

Fax No.: 773-521-5613

Website: www.ventproducts.com

CERTIFICATION & SUBMITTAL
MODEL: 2750 EXTRUDED ALUMINUM LOUVER
 4" Deep Drainable Blade @ 45°



STANDARD SPECIFICATIONS

- **FRAME:** .081 6063T5 extruded aluminum.
- **BLADES:** .081 6063T5 extruded aluminum.
- **BIRDSCREEN:** .051 X 3/4" diamond pattern expanded aluminum.
- **FINISH:** Standard Mill.
- **MAXIMUM SINGLE SECTION:** 72" x 96"
- **MINIMUM SIZE:** 12" x 12"
- **NOTE:** A and B are opening dimensions. Unless otherwise specified, louvers are made 1/4" undersize.

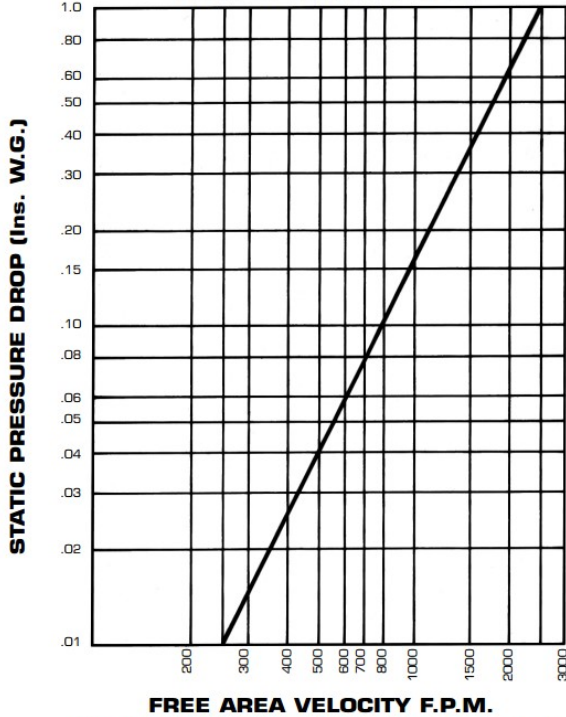
OPTIONS

- 31 Flange
- 32 Multiple Section
- 34 Buck Frame requires flanged louver.
- 35 Sill Extension.
- 40 Standard Screen in removable frame.
- 42 18 x 16 Mesh aluminum insect screen.
- 43 18 x 16 Mesh bronze insect screen.
- 44 1/2" x 1/2" x 16 gauge S.S. screen.
- 45 1/2" x 1/2" x .063 aluminum screen.
- 89 Sleeve.

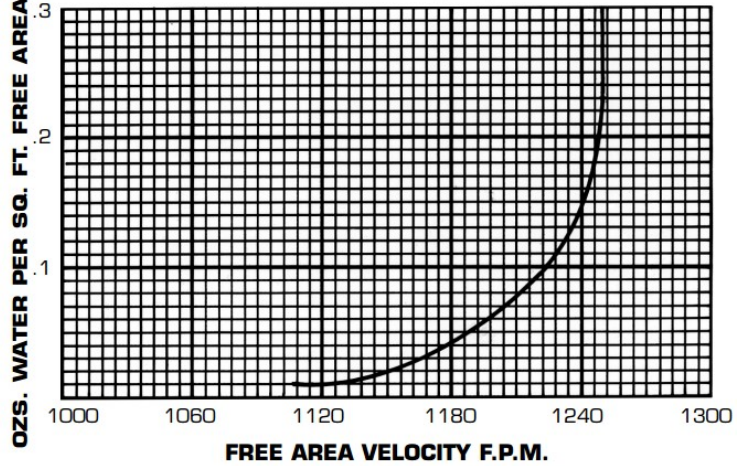


PERFORMANCE DATA
MODEL: 2750 EXTRUDED ALUMINUM LOUVER
 4" Deep Drainable Blade @ 45°

AIR PERFORMANCE TEST



WATER PENETRATION CHART



THE BEGINNING OF WATER PENETRATION IS 1106 F.P.M.

It is possible for moisture to penetrate louvers under adverse atmospheric conditions. For critical applications, drained ductwork or other means of drainage is recommended.

Air Performance data reflects both intake and exhaust modes.

TEST UNIT SIZE 48" X 48" (15 Min. Duration)

Data shown does not include the effect of a birdscreen. Graphs are corrected to standard air density .075 lb. per cubic foot.

RECOMMENDED MAXIMUM INTAKE FREE AREA VELOCITY 1000 F.P.M.



VENT PRODUCTS CO., INC.

Certifies that the 2750 louver shown herein is licensed to bear the AMCA Seal. The ratings shown are based on tests and procedures performed in accordance with AMCA Publications 511 and comply with the requirements of the AMCA Certified Ratings Program. The AMCA Certified Ratings Seal applies to air performance and ratings and water penetration ratings.

FREE AREA CHART

		A - WIDTH (In Inches)																
		8	12	16	20	24	28	32	36	40	44	48	52	56	60	64	68	72
B - HEIGHT (In Inches)	12	.11	.19	.26	.34	.41	.48	.56	.63	.71	.78	.86	.93	1.01	1.08	1.16	1.23	1.31
	16	.18	.29	.41	.52	.64	.76	.88	.99	1.11	1.23	1.34	1.46	1.58	1.70	1.81	1.93	2.05
	20	.27	.44	.62	.78	.97	1.15	1.32	1.50	1.68	1.85	2.03	2.21	2.39	2.56	2.74	2.92	3.09
	24	.35	.59	.82	1.06	1.30	1.53	1.77	2.01	2.25	2.48	2.72	2.96	3.19	3.43	3.67	3.90	4.14
	28	.44	.73	1.03	1.33	1.63	1.92	2.22	2.52	2.81	3.11	3.41	3.70	4.00	4.30	4.59	4.89	5.19
	32	.52	.86	1.21	1.56	1.91	2.26	2.61	2.96	3.31	3.66	4.01	4.36	4.71	5.06	5.40	5.75	6.10
	36	.58	.97	1.36	1.75	2.13	2.53	2.92	3.31	3.70	4.09	4.48	4.87	5.26	5.65	6.04	6.43	6.82
	40	.64	1.07	1.50	1.93	2.36	2.79	3.22	3.65	4.08	4.51	4.94	5.37	5.81	6.24	6.67	7.10	7.53
	44	.71	1.19	1.67	2.15	2.64	3.12	3.60	4.08	4.56	5.04	5.52	6.01	6.49	6.97	7.45	7.93	8.41
	48	.80	1.33	1.86	2.40	2.94	3.47	4.01	4.55	5.08	5.62	6.16	6.69	7.23	7.77	8.30	8.84	9.37
	52	.88	1.48	2.07	2.67	3.27	3.86	4.46	5.05	5.65	6.25	6.84	7.44	8.04	8.63	9.23	9.82	10.42
	56	.97	1.62	2.28	2.94	3.59	4.25	4.91	5.56	6.22	6.87	7.53	8.19	8.84	9.50	10.16	10.81	11.47
	60	1.04	1.75	2.45	3.16	3.86	4.57	5.27	5.98	6.68	7.39	8.09	8.80	9.50	10.21	10.91	11.62	12.32
	64	1.10	1.85	2.59	3.34	4.08	4.83	5.58	6.32	7.07	7.81	8.54	9.28	10.02	10.76	11.50	12.24	12.98
	68	1.16	1.95	2.73	3.52	4.31	5.09	5.88	6.67	7.46	8.24	9.03	9.82	10.60	11.39	12.18	12.96	13.75
	72	1.24	2.07	2.90	3.74	4.58	5.41	6.25	7.08	7.92	8.76	9.59	10.43	11.26	12.10	12.94	13.77	14.61
76	1.33	2.22	3.11	4.01	4.90	5.80	6.70	7.59	8.49	9.38	10.28	11.18	12.07	12.97	13.86	14.76	15.65	
80	1.41	2.37	3.32	4.28	5.23	6.19	7.14	8.10	9.06	10.01	10.97	11.92	12.88	13.83	14.79	15.75	16.70	
84	1.50	2.51	3.53	4.54	5.56	6.58	7.59	8.61	9.62	10.64	11.65	12.67	13.69	14.70	15.72	16.73	17.75	
88	1.57	2.63	3.69	4.75	5.81	6.87	7.93	9.00	10.05	11.12	12.18	13.24	14.30	15.36	16.42	17.48	18.54	
92	1.63	2.73	3.83	4.93	6.03	7.14	8.24	9.34	10.44	11.54	12.65	13.75	14.85	15.95	17.05	18.16	19.26	
96	1.69	2.83	3.97	5.11	6.26	7.40	8.54	9.69	10.83	11.97	13.11	14.26	15.40	16.54	17.69	18.83	19.97	