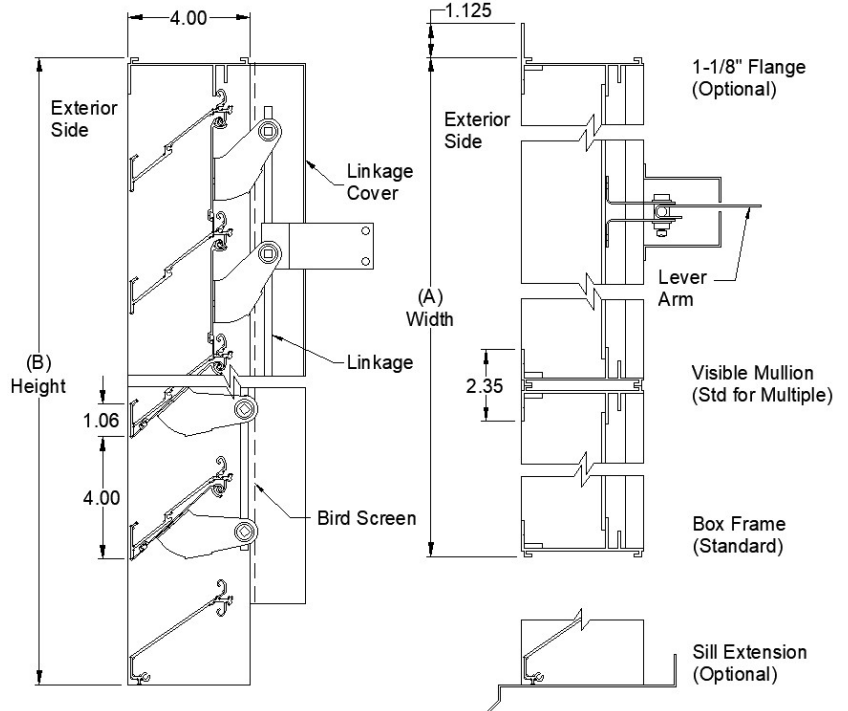
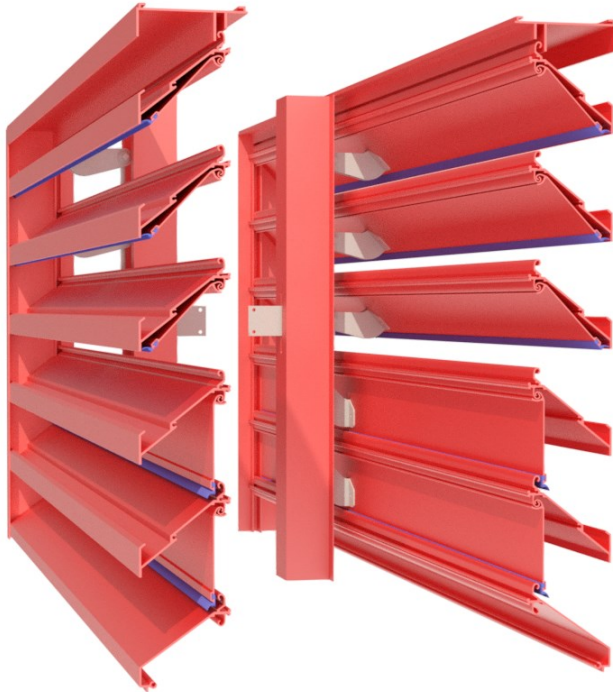




**VENT PRODUCTS CO., INC.**  
 Certifies that the 2400 louver shown herein is licensed to bear the AMCA Seal. The ratings shown are based on tests and procedures performed in accordance with AMCA Publications 511 and comply with the requirements of the AMCA Certified Ratings Program. The AMCA Certified Ratings Seal applies to air performance and ratings and water penetration ratings.

**VENT PRODUCTS CO., INC.**  
 1901 South Kilbourn Avenue Chicago, Illinois 60623  
 Telephone : 773-521-1900  
 Fax No. : 773-521-5613  
 Website: www.ventproducts.com

**CERTIFICATION & SUBMITTAL**  
**MODEL: 2400 Combination Damper/Louver**  
**4" Deep Drainable Blade Intake/Exhaust**



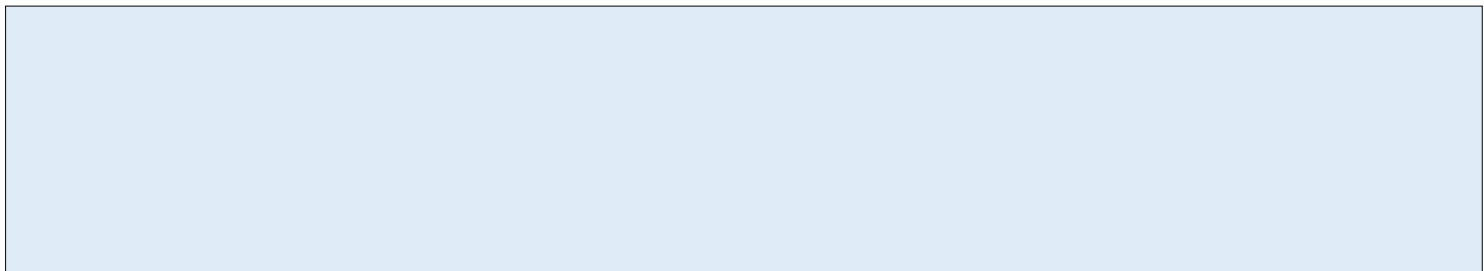
**STANDARD SPECIFICATIONS**

- **FRAME:** .081 6063T5 extruded aluminum.
- **BLADES:** .072 6063T5 extruded aluminum with full length pivoting.
- **BIRDSCREEN:** .051 X 3/4" diamond pattern expanded aluminum.
- **HARDWARE:** Plated steel center brackets; brass pivots; 5/16" dia. plated steel linkage rod.
- **OPERATING ARM:** 14 guage galvanized steel.
- **COVER CHANNEL:** .063 aluminum.
- **BLADE EDGE SEAL:** Vinyl gasketing extending full length of adjustable blades.
- **FINISH:** Standard Mill.
- **MAXIMUM SINGLE SECTION:** 60" x 60", 48" x 72", 24" x 96"
- **MINIMUM SIZE:** 12" x 12"

**NOTE:** A and B are opening dimensions. Unless otherwise specified, louvers are made 1/4" undersize.

**OPTIONS**

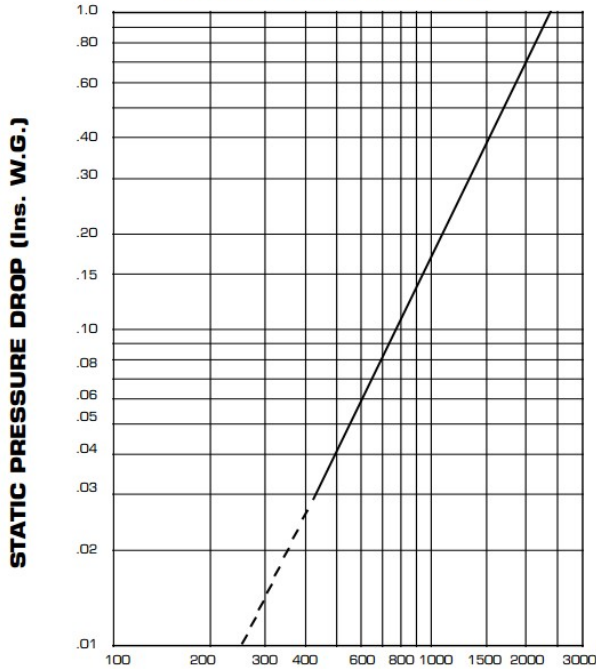
- 31 Flange.
- 32 Multiple Section.
- 34 Buck Frame.
- 35 Sill Extension.
- 40 Standard Screen in removable frame.
- 42 18 x 16 Mesh aluminum insect screen.
- 43 18 x 16 Mesh bronze insect screen.
- 44 1/2" x 1/2" x 16 gauge S.S. screen.
- 45 1/2" x 1/2" x .063 aluminum screen.
- 89 Sleeve.
- 90 Jackshaft.
- 92 Actuators.





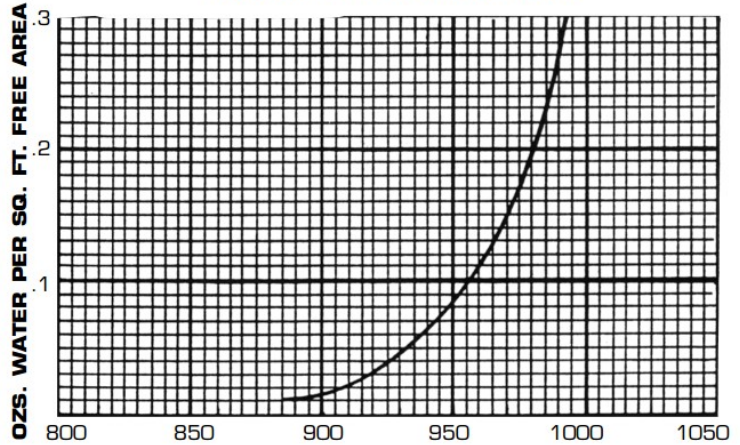
**PERFORMANCE DATA**  
**MODEL: 2400 Combination Damper/Louver**  
 4" Deep Drainable Intake/Exhaust

**AIR PERFORMANCE TEST**



**FREE AREA VELOCITY F.P.M.**

**WATER PENETRATION CHART**



**FREE AREA VELOCITY F.P.M.  
(15 Min. Duration)**

**THE BEGINNING OF WATER PENETRATION IS 880 F.P.M.**

It is possible for moisture to penetrate louvers under adverse atmospheric conditions. For critical applications, drained ductwork or other means of drainage is recommended.

Data shown does not include the effect of the birdscreen.

Graphs are corrected to standard air density .075 lb. per cubic foot.

**TEST UNIT SIZE 48" X 48"**  
**RECOMMENDED MAXIMUM INTAKE FREE AREA VELOCITY 800 F.P.M.**



**VENT PRODUCTS CO., INC.**  
 Certifies that the 2400 louver shown herein is licensed to bear the AMCA Seal. The ratings shown are based on tests and procedures performed in accordance with AMCA Publications 511 and comply with the requirements of the AMCA Certified Ratings Program. The AMCA Certified Ratings Seal applies to air performance and ratings and water penetration ratings.

**FREE AREA CHART**

**A - WIDTH (In Inches)**

		12	16	20	24	28	32	36	40	44	48	52	56	60
B - HEIGHT (In Inches)	12	.15	.21	.28	.34	.41	.47	.53	.60	.66	.73	.79	.85	.92
	16	.30	.43	.55	.68	.81	.94	1.07	1.20	1.32	1.45	1.58	1.71	1.84
	20	.45	.64	.83	1.03	1.22	1.41	1.60	1.79	1.99	2.18	2.37	2.58	2.76
	24	.59	.85	1.11	1.36	1.62	1.88	2.14	2.39	2.65	2.91	3.16	3.42	3.68
	28	.74	1.06	1.38	1.71	2.03	2.35	2.67	2.99	3.31	3.63	3.95	4.27	4.60
	32	.89	1.28	1.66	2.05	2.43	2.82	3.20	3.59	3.97	4.36	4.74	5.13	5.52
	36	1.04	1.49	1.94	2.39	2.84	3.29	3.74	4.19	4.64	5.09	5.54	5.98	6.43
	40	1.19	1.70	2.21	2.73	3.24	3.76	4.27	4.78	5.30	5.81	6.33	6.84	7.35
	44	1.34	1.91	2.49	3.07	3.65	4.23	4.80	5.38	5.96	6.54	7.12	7.69	8.27
	48	1.48	2.13	2.77	3.41	4.05	4.70	5.34	5.98	6.62	7.27	7.91	8.55	9.19
	52	1.63	2.34	3.05	3.75	4.46	5.17	5.87	6.58	7.29	7.99	8.70	9.40	10.11
	56	1.78	2.55	3.32	4.09	4.86	5.63	6.41	7.18	7.95	8.72	9.49	10.26	11.03
	60	1.93	2.76	3.60	4.43	5.27	6.10	6.94	7.77	8.61	9.44	10.28	11.11	11.95
	64	2.08	2.98	3.88	4.78	5.67	6.57	7.47	8.37	9.27	10.17	11.07	11.97	12.87
	68	2.23	3.19	4.15	5.12	6.08	7.04	8.01	8.97	9.93	10.90	11.86	12.82	13.79
	72	2.37	3.40	4.43	5.46	6.49	7.51	8.54	9.57	10.60	11.62	12.65	13.68	14.71
76	2.52	3.61	4.71	5.80	6.89	7.98	9.07	10.17	11.26	12.35	13.44	14.53	15.63	
80	2.67	3.83	4.98	6.14	7.30	8.45	9.61	10.76	11.92	13.08	14.23	15.39	16.55	
84	2.82	4.04	5.26	6.48	7.70	8.92	10.14	11.36	12.58	13.80	15.02	16.24	17.47	
88	2.97	4.25	5.54	6.82	8.11	9.39	10.68	11.96	13.25	14.53	15.81	17.10	18.38	
92	3.12	4.47	5.81	7.16	8.51	9.86	11.21	12.56	13.91	15.26	16.61	17.95	19.30	
96	3.26	4.68	6.09	7.50	8.92	10.33	11.74	13.16	14.57	15.98	17.40	18.81	20.22	